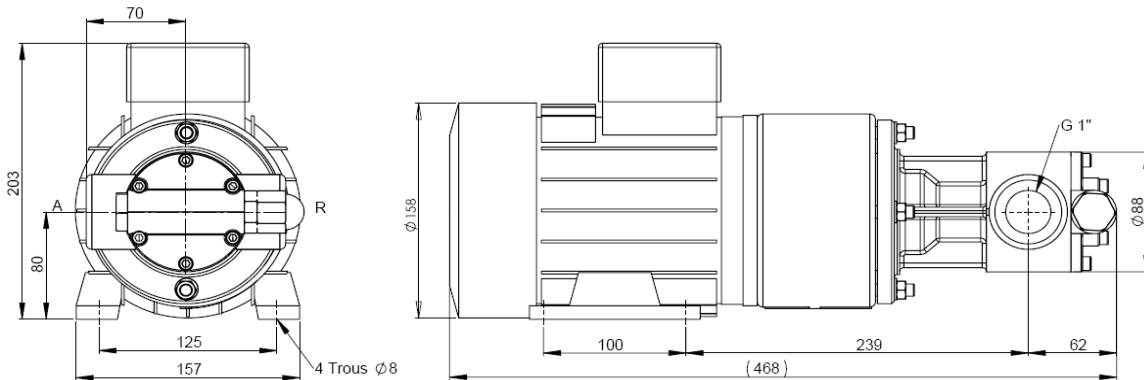
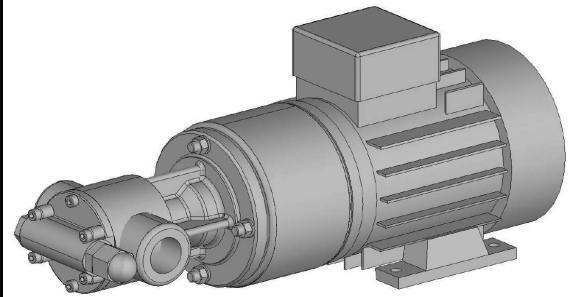


MP10 - MP16 - MP20 - MP 25



Cubic displacement per rotation	10	16	20	25
Speed rotation range in RPM	0-2100			
Fluid viscosity range in cSt	1-50 000			
Vacuum in bar	-0,7			
Max operating pressure in bar	20			
Operating temperature range in °C	-20 / +160			
Body pump raw material	Cast iron			
Shaft and stator raw material	Special steel			
Integrated safety by-pass	Optional			
Hard particles maximal size	400 µ			
Soft particles maximal size	10 mm			
Seal type	Mechanical	Lip seal	Packing	Magnetic
Motor power in Kw	0,75			



Flow calculation : Curves are for MP25 pump (25cm³ per rotation), for MP10 it is necessary to divide by 1.56 (flow is proportional to the cubic capacity).

