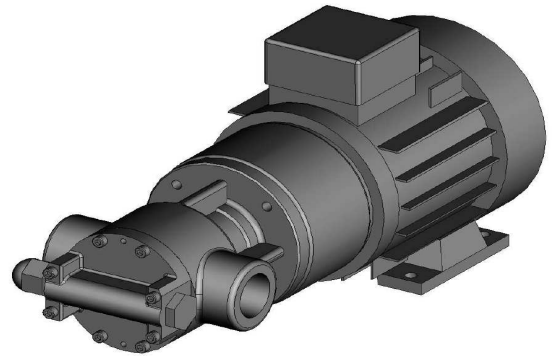


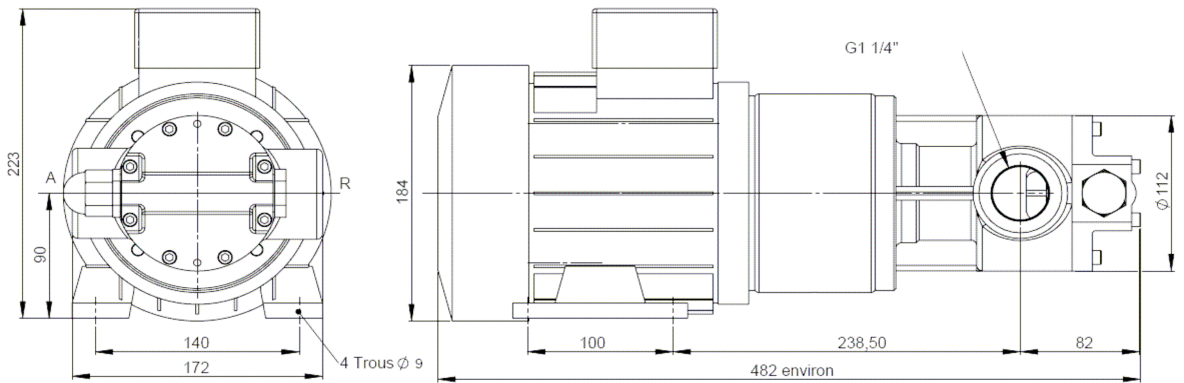
# MP40 - MP60



Cubic displacement per rotation	40	60
Motor power in Kw	1,1Kw (MP40)	1,5Kw (MP60)
Speed rotation range in RPM	0 - 1800	
Fluid viscosity range in cSt	1 - 50 000	
Vacuum in bar	- 0,7	
Max operating pressure in bar	20	
Operating temperature range in °C	-20 / +160	
Body pump raw material	Cast iron	
Shaft and stator raw material	Special steel	
Integrated safety by-pass	Optional	
Hard particles maximal size	400 µ	
Soft particles maximal size	10 mm	
Seal type	Mechanical	



Magnetic Packing



**Flow calculation :** Curves are for MP60 pump (60cm<sup>3</sup> per rotation), for MP40 it is necessary to divide by 1.5 (flow is proportionnal to the cubic capacity).

