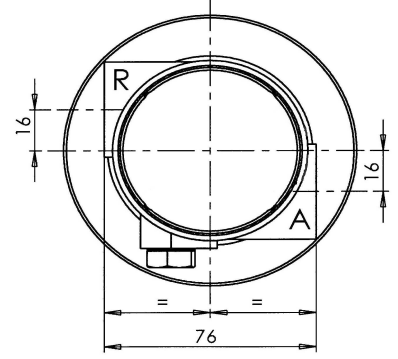
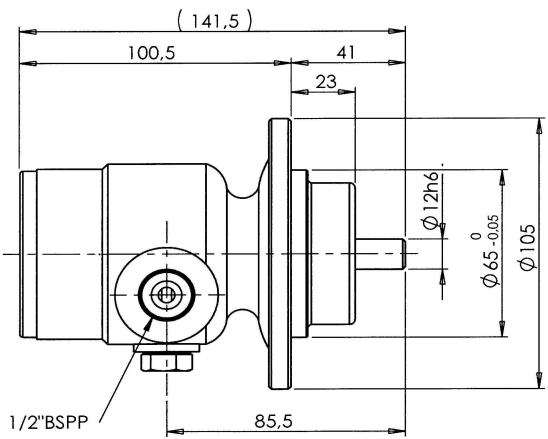
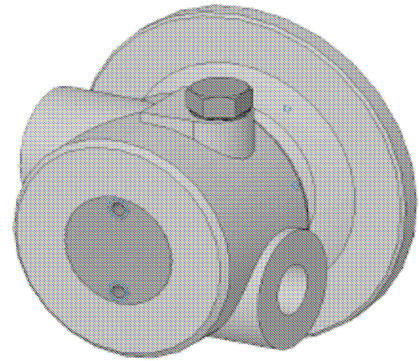


# P01 - P02 - P04 - P06 - P08



<b>Cubic displacement per rotation cm<sup>3</sup></b>	<b>1</b>	<b>2</b>	<b>4</b>	<b>6</b>	<b>8</b>
<b>Speed rotation range in RPM</b>	<b>0- 3 200</b>				
<b>Fluid viscosity range in cSt</b>	<b>1- 50 000</b>				
<b>Pump vacuum in bar</b>	<b>-0,6</b>				
<b>Max operating pressure in bar</b>	<b>20</b>				
<b>Standard operating temperature in °C</b>	<b>-20 / +160</b>				
<b>Body-pump raw material</b>	<b>Cast iron</b>				
<b>Shaft and Stator raw material</b>	<b>Special steel</b>				
<b>Integrated safety by-pass</b>	<b>Yes</b>				
<b>Maximal size of hard particles</b>	<b>200 μ</b>				
<b>Maximal size of soft particles</b>	<b>5 mm</b>				
<b>Seal type</b>	<b>Mechanical</b>	<b>Lip seal</b>	<b>Magnetic</b>	<b>Packing</b>	
<b>End shaft type</b>	<b>Key</b>	<b>Slot</b>	<b>Plain</b>		



**Flow calculation :** The curves are for P06 pump (6cm<sup>3</sup> by turn), for P02 it is necessary to divide by 3, and for a P04 by 1,5 (flow is proportional to the cubic capacity of the pump).

