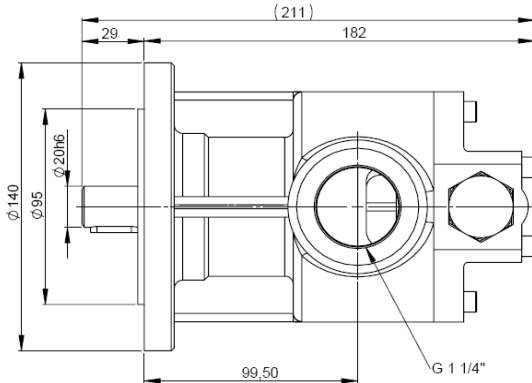
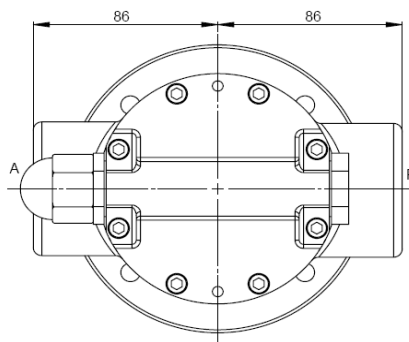
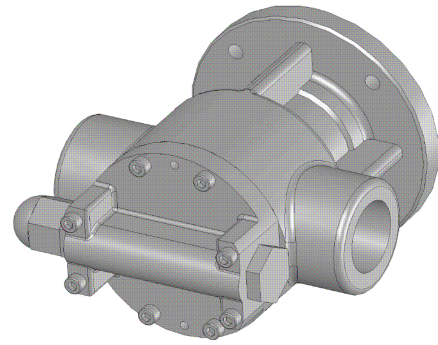


P40 - P60



Cubic displacement per rotation cm3	40	60
Speed rotation range in RPM	0 - 1800	
Fluid viscosity range in cSt	1 - 50 000	
Pump vacuum in bar	- 0,7	
Max operating pressure in bar	20	
Standard operating temperature in °C	-20 / +160	
Body-pump raw material	Cast iron	
Shaft and Stator raw material	Special steel	
Integrated safety by-pass	Yes	
Maximal size of hard particles	400 μ	
Maximal size of soft particles	10 mm	
Seal type	Mechanical	Magnetic
End shaft type	Key	



Flow calculation : Curves are for PR60 pump (60cm³ per rotation), for PR40 it is necessary to divide by 1.5 (flow is proportionnal to the cubic capacity).

